



# RONDÒ



## PAYMENT SYSTEMS

The payment systems and the electronic board are located inside a separate compartment, with independent access and slide-out opening for complete extraction, allowing work to take place in this area without affecting the temperature inside the product compartment. Rondò is pre-set for the installation of systems with Executive and MDB protocol, as well as validators.

The following can be installed on the same machine:

- Change-giver coin mechanism/validator
- Bill validator
- Cashless system with key or card



## ACCESSORIES

- Photocell kit
- Kit to block dispensing compartment
- Additional lamp kit
- Coin box cover kit
- Wall mounting bracket kit
- RS232 jack kit
- GSM kit

## EXAMPLES OF POSSIBLE CONFIGURATIONS

### SNACKS/CANS/BOTTLES CONFIGURATION

- 3 snack trays**  
18 selections / 242 products
- 1 bottle tray**  
8 selections / 48 products
- 2 can trays**  
16 selections / 96 products

10	8	8	10	180 mm
13	15	15	15	170 mm
15	15	15	15	155 mm
6	6	6	6	228.5 mm
6	6	6	6	123.5 mm
6	6	6	6	123.5 mm

### ALL SNACKS CONFIGURATION

- 6 snack trays**  
36 selections / 476 products

8	8	8	8	210 mm
11	11	11	11	200 mm
15	15	15	15	155 mm
15	15	15	15	155 mm
15	15	15	15	155 mm
10	10	10	10	155 mm

Snacks
  Bottles 0.5 litre PET
  Cans 0.33/0.25 litre

The numbers in the table indicate the product capacity

## AVAILABLE SPIRALS AND PRODUCT CAPACITY

RIGHT	LEFT	USEFUL PITCH	NUMBER OF PRODUCTS	HALF TURN
•	•	76	6	NO
•	•	60	7	NO
•	•	50	8	NO
•	•	42	10	NO
•	•	36	11	NO
•	•	30	13	NO
•	•	26	15	NO
•	•	20	19	NO
•	•	20	19+19	YES

## CHARACTERISTICS

Height	1830 mm*
Width	880 mm
Depth	890 mm
Overall depth with door open	1500 mm
Weight	280 kg approx.
Power supply voltage	230 V
Power supply frequency	50 Hz
Installed power	510 W
Maximum operating conditions	32°C - 65% R.H.

\*Adjustable feet: +10 -10 mm

## POWER CONSUMPTION

For each hour of stand-by	270 Wh
Ambient temperature	20°C
Refrigerated box temperature	5°C



**N&W GLOBAL VENDING S.p.A.**  
 Via Roma, 24  
 24030 Valbrembo (BG) Italy  
 Ph. +39 035 606111 - Fax +39 035 606519  
[www.nwglobalvending.com](http://www.nwglobalvending.com)

**Excellent capacity/size ratio**

**Reduced maintenance due to the new slide-in/slide-out cooling unit with front ventilation**

**Ergonomic and anti-vandalism product dispensing compartment with optional blocking device kit**

**Tempered double glazed door**

**5 direct selection buttons and photocells**

**Highly recyclable due to the new type of insulation used**

**Advanced 16-bit electronic control**

**Lock with programmable code**

**Designed to coordinate with the Astro and the Oblò**

## RONDÒ

### All round innovation

Rondò is a new vending machine for dispensing snacks, bottles, cans and Tetra-Pak containers and offers an excellent capacity to size ratio and a very refined design, allowing easy positioning in a bank of vending machines. A solution conceived for busy sites as customers can enjoy maximum visibility of the product displayed due to the large illuminated glass front.

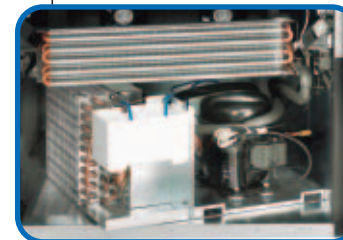
#### INNOVATIONS

Rondò is equipped with a new slide-in/slide-out cooling unit, which is easy to remove, and is fitted with a hot air outlet at the front (patented). The machine can therefore be positioned against a wall without damaging the cooling unit and thus save 10 cm on the depth of the machine. In addition, the unit needs limited maintenance, as the new ventilation grille is easy to remove and clean.



Slide-in/slide-out cooling unit

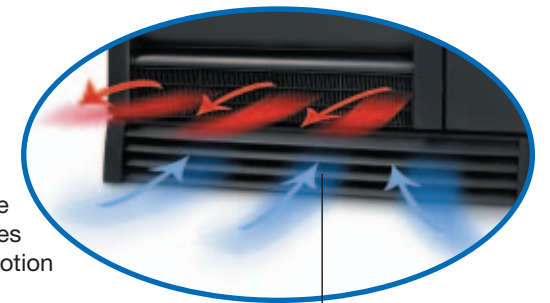
The Rondò has an extremely sturdy ergonomic product dispensing compartment (patented), an anti-theft device and a slow motion closing mechanism. An optional kit is available which will block the dispensing compartment when the vending machine is not being used. However, when a product is dispensed it will open for a programmable length of time to allow the item to be collected.



The tiltable trays, conceived for easy product loading, can be very simply transformed into fixed trays by inserting a small metal insert (patented) that prevents tilting.

#### USER INTERFACE

Offering optimum product visibility for easy identification of the items and simple selection, via the 12 button numeric keypad and optional 5 direct selection button kit. The direct selection button allows virtual selection (2 products with a single selection), and can be assigned to one or more spirals. This ensures that the machine empties evenly, the front of the machine always looks full and allows the promotion of high consumption products.



Front hot air outlet

- Blue alphanumeric display with 4 lines and 20 characters
- Sound signal at the end of the product dispensing sequence
- Ergonomic compartment which opens outward to ensure easy access to the dispensed product - even with one hand.

#### TEMPERATURE

The temperature of the Rondò can be even (8-12°C), programmable as a single value via the software, or in stratified (5-8°C approximately in the lower trays and 8-14°C in the upper trays), achieved by closing the special shutters on the air duct located on the back wall of the refrigerated box.

#### ELECTRONIC CONTROL

The 16-bit electronic control with incorporated flash EPROM is extremely flexible and complete as well as being compatible with the application for PC "Flash", which allows the automatic setup and reading of statistics through the Up-Key or a palmtop device with an RS232 connection (also available in EVA-DTS format). With Flash it is also possible to have remote monitoring of the machine via GSM technology (setup, statistics, alarms). In addition, Rondò can be banked alongside the Astro and the Oblò, using master or slave mode, which allows both machines to share a single payment system, combined selections or a single modem for GSM connections.

